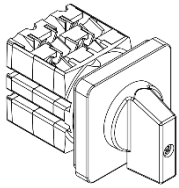




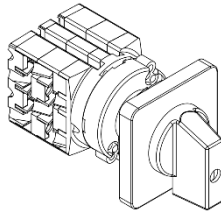
Datenblatt / Data sheet

Nockenschalter Baureihe D0/8 / cam switch series D0/8

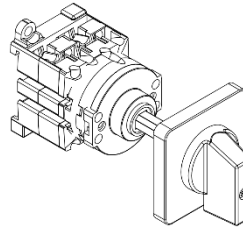
Befestigungsarten / Mounting types



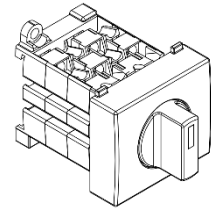
Vierlochbefestigung (E)
Four-hole mounting (E)



Zentrallochbefestigung (ZM)
Central hole mounting (ZM)

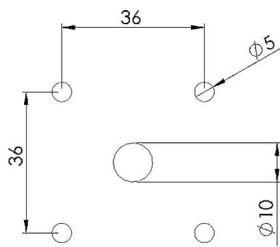


Bodenbefestigung (V)
Floor mounting (V)

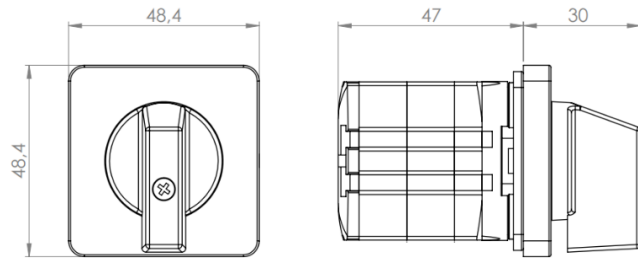


DIN-Normbefestigung (T)
DIN standard mounting (T)

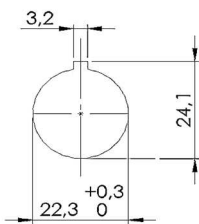
Grundkörper Bohrbilder und Abmessungen / Base body hole patterns and dimensions



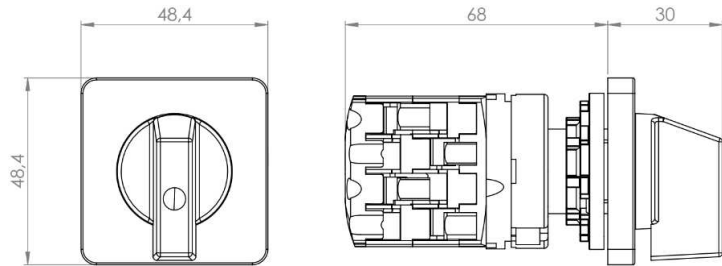
Bohrbild (E)
Drilling pattern (E)



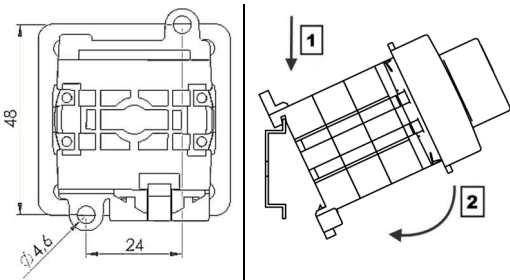
Grundkörper D0/8 mit Vierlochbefestigung (E)
Base body D0/8 with four-hole mounting (E)



Bohrbild (ZM)
Drilling pattern (ZM)

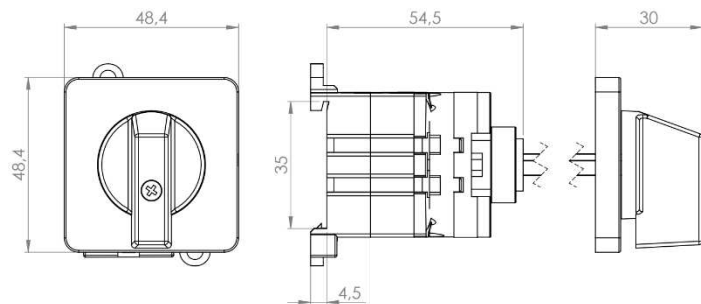


Grundkörper D0/8 mit Zentrallochbefestigung (ZM)
Base body D0/8 with central hole mounting (ZM)

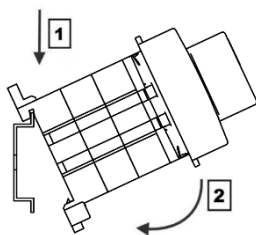


Bohrbild(V)
Drilling pattern (V)

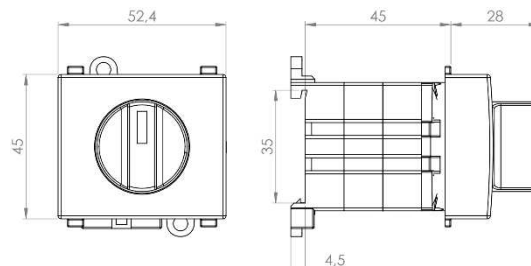
Montagebild (V)
Mounting image (V)



Grundkörper D0/8 mit Bodenbefestigung (V)
Base body D0/8 with floor mounting (V)



Montagebild (T)
Mounting image (T)



Grundkörper D0/8 mit DIN-Normbefestigung (T)
Base body D0/8 with DIN standard mounting (T)



Technische Daten der Baureihe D0/8 / Technical data of the D0/8 series

IEC 60947 / VDE 0660	Einh.	D0/8
Isolationsspannung U_i (Bemessungswert) / Insulation voltage U_i (rated value)	V	690
Stoßspannungsfestigkeit U_{imp} (Bemessungswert) / Surge voltage resistance U_{imp} (rated value)	kV	4
Betriebsspannung U_e (Bemessungswert) / Operating voltage U_e (rated value)	V	440
Anhaltender thermischer Strom I_{th} / Sustained thermal current I_{th}	A	16
Bedingter Kurzschlussstrom bei 690V (Bemessungswert) / Conditional short-circuit current at 690V (rated value)	kA	7
Max. Vorsicherungselement / Max. Back-up fuse element	A	25
Frequenz (Bemessungswert) / Frequency (rated value)	Hz	50/60
Betriebsleistung (Bemessungswert) AC 23A / Operating power (rated value) AC 23A		
AC-23A 3 p. (230V)	kW	2,6
AC-23A 3 p. (400V)	kW	7,5
AC-23A 3 p. (690V)	kW	4,8
AC-23A 1 p. (110V)	kW	0,5
AC-23A 1 p. (230V)	kW	0,9
AC-23A 1 p. (400V)	kW	1,5
Betriebsleistung (Bemessungswert) AC 2 / Operating power (rated value) AC 2		
AC-2 3 p. (230V)	kW	3,5
AC-2 3 p. (400V)	kW	6
AC-2 3 p. (690V)	kW	6
Betriebsleistung (Bemessungswert) AC 3 / Operating power (rated value) AC 3		
AC-3 3 p. (230V)	kW	2,2
AC-3 3 p. (400V)	kW	5,5
AC-3 3 p. (690V)	kW	4
AC-3 1 p. (110V)	kW	0,4
AC-3 1 p. (230V)	kW	0,75
AC-3 1 p. (400V)	kW	1,3
Betriebsstrom bei DC-21A (Zeit konstant 0...11ms) / Operating current at DC-21A (time constant 0...11ms)		
1 Kontakt in Reihe (24V) / 1 contact in series (24V)	A	20
1 Kontakt in Reihe (48V) / 1 contact in series (48V)	A	20
2 Kontakte in Reihe (60V) / 2 contact in series (60V)	A	20
3 Kontakte in Reihe (110V) / 3 contact in series (110V)	A	20
5 Kontakte in Reihe (220V) / 5 contact in series (220V)	A	20
9 Kontakte in Reihe (440V) / 9 contact in series (440V)	A	20
10 Kontakte in Reihe (600V) / 10 contact in series (600V)	A	16
Betriebsstrom bei DC-22A (Zeit konstant 0...150ms) / Operating current at DC-22A (time constant 0...150ms)		
1 Kontakt in Reihe (24V) / 1 contact in series (24V)	A	10
1 Kontakt in Reihe (30V) / 1 contact in series (30V)	A	4,5
1 Kontakt in Reihe (40V) / 1 contact in series (40V)	A	4,5
2 Kontakte in Reihe (60V) / 2 contact in series (60V)	A	4,5
3 Kontakte in Reihe (110V) / 3 contact in series (110V)	A	4,5
5 Kontakte in Reihe (220V) / 5 contact in series (220V)	A	4,5



Gemäß UL/CSA / According to UL/CSA		Einh.	D0/8
Max. Betriebsspannung U _e / Max. Operating voltage U _e		V	600
Betriebsstrom I _e / Operating current I _e		A	16
max. unbeeinflusster Fehlstrom / Max. unaffected residual current		kA	10
max. Vorsicherung / max. back-up fuse		A	1
Gemessene Stärke 3 Phasen (UL 60947-4-1) / Measured strength 3 phases (UL 60947-4-1)			
3x120 V		HP	1
3x240 V		HP	2
3x480 V		HP	5
3x600 V		HP	5,2
Gemessene Stärke 1 Phase (UL 60947-4-1) / Measured strength 1 phase (UL 60947-4-1)			
1x120 V		HP	1
1x240 V		HP	1
1x480 V		HP	2
1x600 V		HP	3
Anschlüsse (nur CU-Leiter) / Connections (CU conductor only)		Einh.	D0/8
IEC			
Anzugsdrehmoment / Tightening torque		Nm	1,1
Eindrähtig (Kl. 1) / Single-wire (class 1)		mm ²	1,5-4
Feindrähtig mit Aderendbearbeitung (Kl. 5) / Fine stranded with wire end treatment (class 5)		mm ²	1,5-2,5
UL		AWG	14-12
CSA		AWG	14-12
Sonstiges / Other		Einh.	D0/8
Zulässige Betriebstemperatur / Permissible operating temperature		°C	-25...+55
Verlustleistung pro Leiterbahn / Power loss per conductor track		W	2,3
Mechanische Lebensdauer (Schaltspiele) / Mechanical service life (switching cycles)		n	100.000
Berührungsschutz nach DIN VDE 0106-100 / Contact hazard protection according to DIN VDE 0106-100		-	Ja

Approbationen / Konformität / Approvals / Conformity

				
UL - 508	DIN EN IEC 60947-3	EG-Konf.	UK-Konf.	REACH-RoHS Konf.