

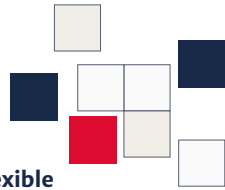
Switches for every challenge



sontheimer

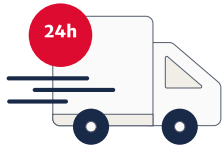
What makes our switches **unique**

Whether it's for industry or infrastructure, mechanical engineering or renewable energies, our rotary cam switches and on-load switches have demonstrated their success across a wide range of sectors and for an extensive variety of applications. As a main switch, repair switch or changeover switch. Individually configured for virtually any requirement – with our modular switch system.



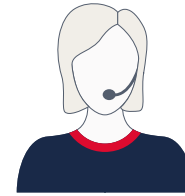
Individual and flexible

We can handle practically any technical challenge you may have thanks to our modular system. And if we don't have your switch solution already in place, we would be happy to develop it with you. Even from unit numbers of as little as one.



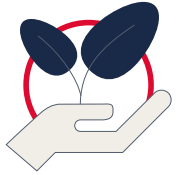
Fast and always available

All of our development and production processes take place in Germany. This means we can work quickly and flexibly at all times without any dependencies and can deliver within a single day, even in the case of custom-made solutions.



Well advised and supported

We're here to help you – from selection and configuration to repair of your products. Personal, with top-class service tailored to your needs.



Sustainable production

We carry out everything in one single location. This strengthens the local economy and minimises the environmental footprint. Our goal: climate-neutral production of all of our switches.



High quality and safe

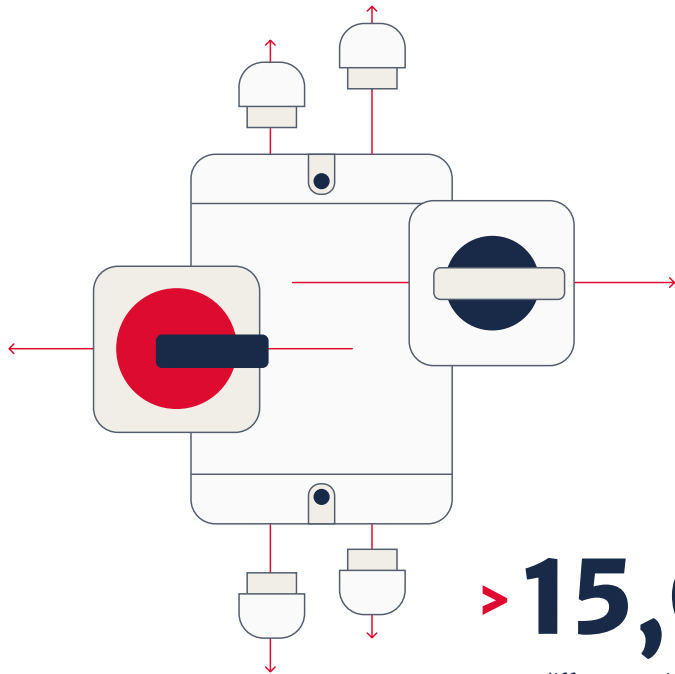
Thanks to 100% electrical controls, we enable certification that goes beyond current international safety standards. We produce your switch solutions to the highest quality under the strictest-possible conditions.

Outstanding in both price and performance

Thanks to our streamlined processes and short distances, we offer an efficient, cost-saving approach.

Passionate about the world of switches

We have been manufacturing high-quality switching devices since 1946. As a family business with over 200 employees, all of our development and production processes are carried out in Germany. Our rotary cam and on-load switches are used across a wide range of industries, from mechanical engineering to renewable energies. Maximum quality, following the highest international standards, and at excellent prices.

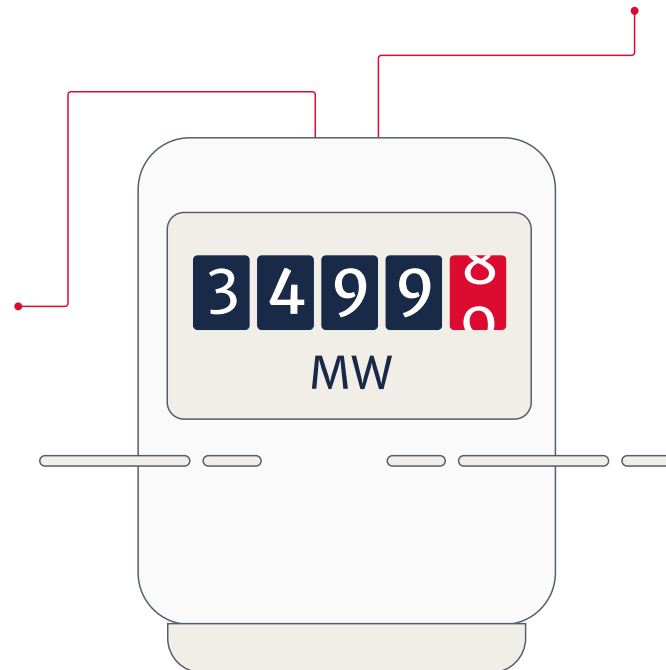
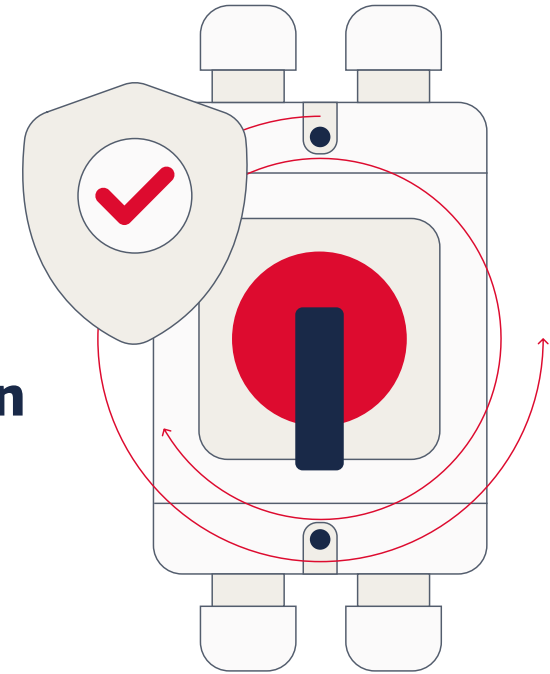


> **15,000**

different active switch types produced each year.

> **500 million**

safe switching operations enabled per year by our switches.



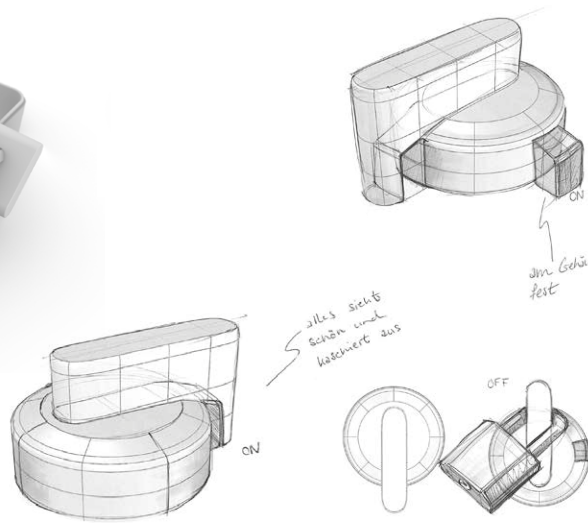
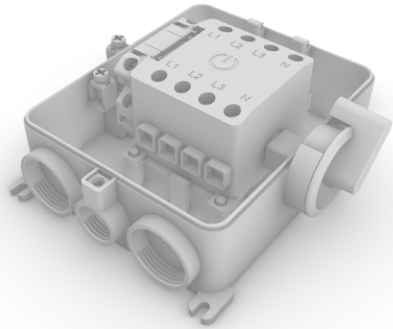
> **35,000**

MW of switching capacity provided per year – equivalent to around 6,000 wind turbines.

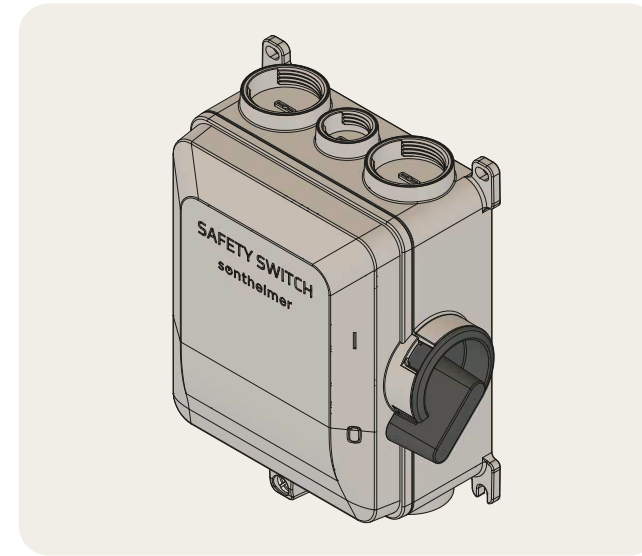


From development and construction to assembly, we combine our entire value chain under one roof at our site in Schwabach.

Set the future to “ON” – our latest RLS housing switches



RLS safety switch Compact all-rounder

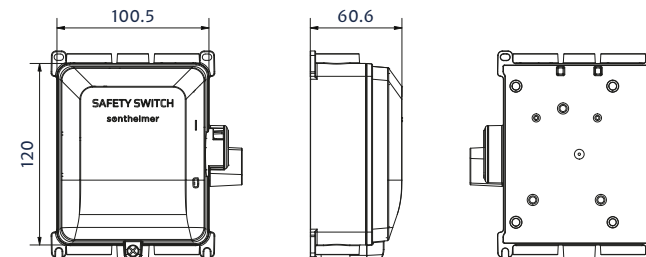


Benefits for you

- Extremely flexible connection options for optimised wiring management
- Retrofittable auxiliary contacts for individual customisations
- Mechanically lockable cover in ON position
- Cover attachment with one screw
- External earth terminal

Thanks to its compact dimensions and intelligent design, our new switch is both easy to install and highly functional. Available in 16 to 32 A versions and with 2, 3 or 4 poles, it is ideally suited to your individual requirements. The lockable OFF position protects against unauthorised access, while the removable main switch makes wiring easier.

Series	I_{th} [A]	AC23 [kW] / 400V	AC3 [kW] / 400V	U_i [V]
RLS16	16	7.5	5.5	690
RLS25	25	9	7.5	690
RLS32	32	11.5	9.5	690



Rotary cam switches

Extremely flexible and reliable



Benefits for you

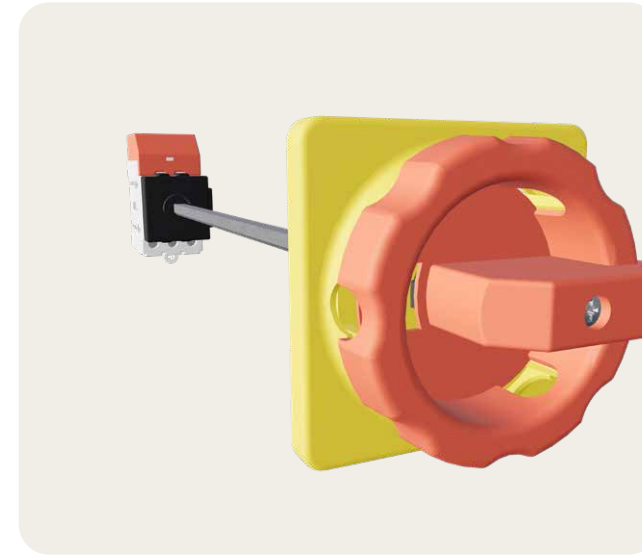
- Custom-made switches available quickly
- Touch-safe terminals for maximum safety
- High contact reliability
- Worldwide approvals: IEC, CE, UL, CSA, CCC, EAC, UKCA

Our rotary cam switches offer safe, versatile solutions for switches from 10 to 1,600 A. We produce them in various styles, tailored to your specific needs. Thanks to a variety of accessories, the switches can be adapted flexibly to a wide range of situations.

Series	I_{th} [A]	AC23 [kW] / 400 V	AC3 [kW] / 400 V	U_i [V]
D00-4/6	10	3	2.2	500
D0-7/8/11/12/13	25	7.5	5.5	690
D1-16	25	9	7.5	690
D1-20	32	10.5	9	690
D1-32	45	15	11	690
D1-40	63	18	15	690
D1-55	100	37	30	690
D2-63	100	26.5	22	690
D2-100	125	32.5	27	690
D2-160	160	40	37	690
D2-126	200	45.5	40	690
D3-250	315	75	64	690

LO switch series

Maximum performance in the tightest spaces



Benefits for you

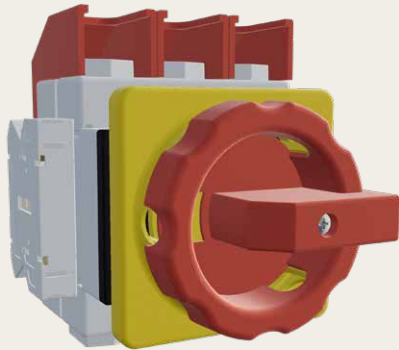
- One size for currents from 16 to 63 A
- Flexible installation options for maximum convenience
- High versatility – suitable for use in machines, power distribution systems and motor controls
- High energy efficiency
- Worldwide approvals: IEC, CE, UL, CSA, CCC, EAC, UKCA

Our LO series offers reliable on-load switches in an extremely compact design – for all currents from 16 to 63 A. Perfect for all applications where space is at a premium and high performance is desired.

Series	I_{th} [A]	AC23 [kW] / 400 V	AC3 [kW] / 400 V	U_i [V]
LO16	16	7.5	5.5	690
LO25	25	9	7.5	690
LO32	32	11.5	9.5	690
LO40	40	15	11.5	690
LO63	63	22	18.5	690

LT on-load switches

Robust, versatile and energy-efficient



Benefits for you

- Comprehensive range of accessories for individual requirements
- Developed for extreme environments with high energy efficiency
- Custom-made options available quickly
- Worldwide approvals: IEC, CE, UL, CSA, CCC, EAC, UKCA

This series comprises four sizes for a rated current range of 16 to 315 A. It is specially designed for harsh, complex environments and offers a range of accessory options. Ideal for more challenging applications where flexible, durable and expandable switches are needed.

Series	I_{th} [A]	AC23 [kW] / 400 V	AC3 [kW] / 400 V	U_i [V]
LT16	16	7.5	5.5	690
LT20	20	7.5	5.5	690
LT25	25	9.5	7.5	690
LT32	32	11.5	9.5	690
LT40	40	20	11	690
LT63	63	22	18.5	690
LT80	80	30	22	690
LT100	100	37	30	690
LT125	125	45	37	690
LT160	160	75	50	690
LT180	180	90	75	690
LT250	250	132	110	690
LT315	315	132	110	690

LX on-load switches

Optimal for NAFTA markets



Benefits for you

- Compact design, smaller than UL 98 devices
- High short-circuit current rating (SCCR)
- Optimised insulation distances for additional safety
- Approvals: IEC, CE, UL, CSA, UKCA

These extremely flexible switches meet the stringent requirements of the UL489 standard – ideal for machines and industrial facilities in the North American market. Available in a rated current range of 30 to 150 A, they are suitable as main switches or circuit breakers in supply or distribution circuits, for example.

Series	I_{th} [A]	Value [hp] / 240 V 3-phase	Value [hp] / 480 V 3-phase	U_i [V]
HLX80	32	10	20	690
HLX125	63	10	30	690
HLX160	100	30	60	690
HLX180	125	40	75	690
HLX250	160	50	100	690

LC switch series

High performance with maximum energy efficiency



Benefits for you

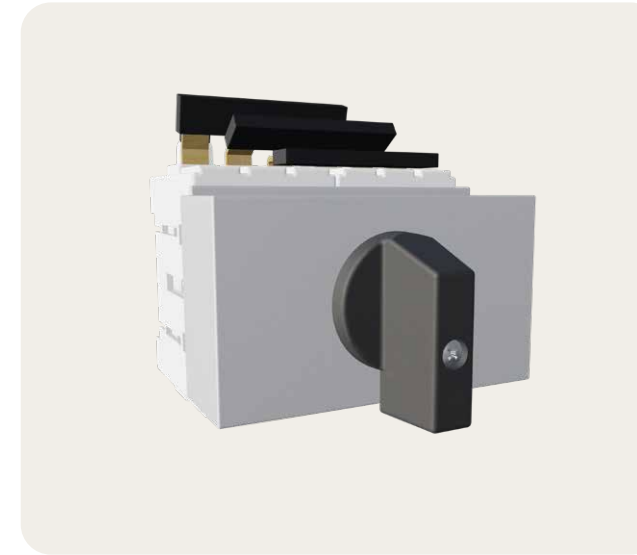
- High energy efficiency, reduced cooling requirement
- High short-circuit current rating for maximum safety
- Ring cable connection available for convenient installation
- Comprehensive range of accessories such as handles and signal contacts
- Approvals: IEC, CE, EAC, UKCA, Kema Keur, RINA

The LC series is specially designed for safe switching of high currents up to 3,150 A and is available in six different sizes. These switches enable up to 60% less power loss compared to similar products. This reduces your energy consumption and ensures a quick return on investment.

Series	In [A]	Ie [A] utilisation category/ 400 V	U _i [V]	Short-time withstand current for 1 s [kA]
LC2-250	250	250/ AC23	1,500	8
LC2-315	315	315/ AC22	1,500	8
LC3-315	315	315/ AC23	1,500	13
LC3-400	400	400/ AC23	1,500	13
LC3-500	500	500/ AC23	1,500	13
LC4-630	630	630/ AC23	1,500	26.5
LC4-800	800	800/ AC22	1,500	26.5
LC5-800	800	800/ AC23	1,500	50
LC5-1000	1,000	1,000/ AC23	1,500	50
LC5-1250	1,250	1,250/ AC23	1,500	50
LC5-1600	1,600	1,250/ AC23	1,500	50
LC5-2000	2,000	1,250/ AC23	1,500	50
LC-2500	2,500	1,250/ AC23	1,500	50
LC5-3150	3,150	1,250/ AC23	1,500	50
LC6-1600	1,600	1,250/ AC23	1,500	60
LC6-2000	2,000	1,250/ AC23	1,500	60
LC6-2500	2,500	2,500/ AC22	1,500	70
LC6-3150	3,150	3,150/ AC21	1,500	70

LO/LT series manual transfer switches

Compact and space-saving



Benefits for you

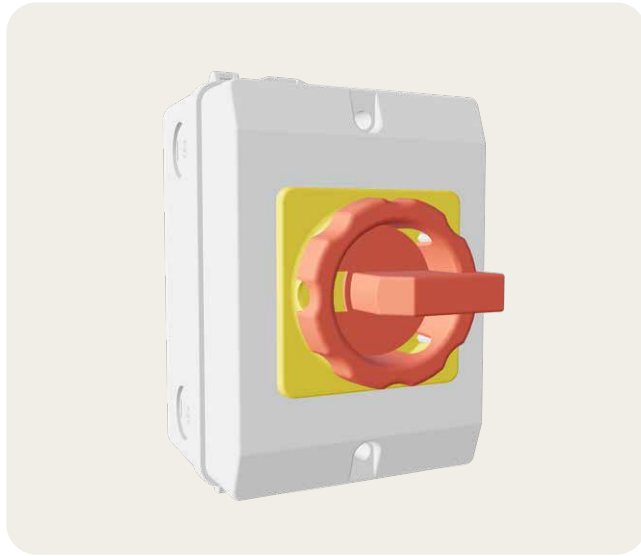
- 4-pole version leading neutral conductor (N)
- Main contacts with connections as standard
- Optional use as a mains and emergency manual transfer switch (MTSE)
- Compact design for installation in confined spaces
- Worldwide approvals: IEC, CE, UL, CSA, CCC, EAC, UKCA

This series can also be used as an emergency manual transfer switch (MTSE) in accordance with IEC 60947-6-1. With a rated current range of 16 to 315 A, the switches are extremely compact and space-saving – a flexible solution for a diverse range of applications.

Series	I _n [A]	AC23 [kW] / 400 V	AC3 [kW] / 400 V	U _i [V]
ULO16	16	7.5	5.5	690
ULO25	25	9	7.5	690
ULO32	32	11.5	9.5	690
ULO40	40	15	11.5	690
ULO63	63	22	18.5	690
ULT80	80	30	22	690
ULT100	100	37	30	690
ULT125	125	45	37	690
ULT160	160	75	50	690
ULT180	180	90	75	690
ULT250	250	132	110	690
ULT315	315	132	110	690

Maintenance and safety switches

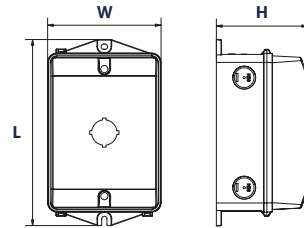
Reliable disconnection for safe maintenance



Benefits for you

- Protection class IP65 and Nema 4X for complex environments
- Lockable switches prevent opening in 'ON' position
- UV-resistant
- EMV protection solutions for special applications
- Auxiliary contacts available
- Worldwide approvals: IEC, CE, UL, CSA, CCC, EAC, UKCA

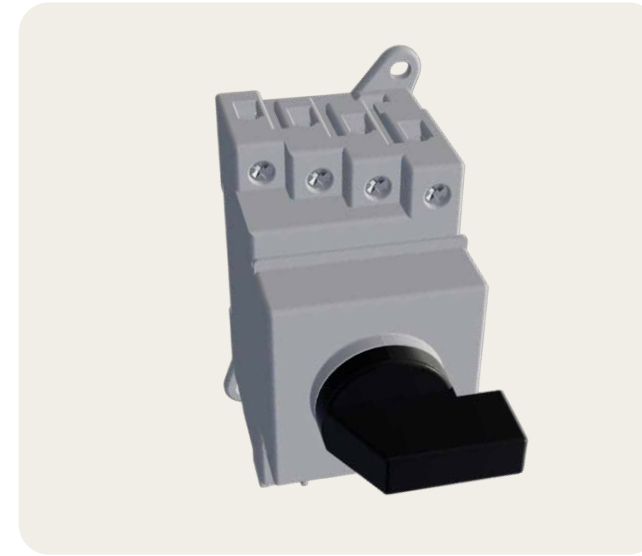
With these encapsulated on-load switches and rotary cam switches, you can safely switch off machines and system components safely during maintenance or repairs. Available in robust housings, they cover a current range of 10 to 315 A. The spacious connection compartments enable convenient wiring.



Housing	Length [mm]	Width [mm]	Height [mm]	Material
PLM-D0	92	64	Varied	Plastic
PLM-D1	96	96	Varied	Plastic
PM-D1/PZ-D1	161	100	80.5	Plastic
PM-D2/PZ-D2	200	146	104	Plastic
PM-D3/PZ-D3	304	214	137	Plastic
K4	374	374	225	Plastic
B1	200	150	120	Steel
V2A1	200	200	120	Stainless steel
GLM	96	96	108	Zinc die casting

DC switches

Compact and safe for photovoltaic systems



Benefits for you

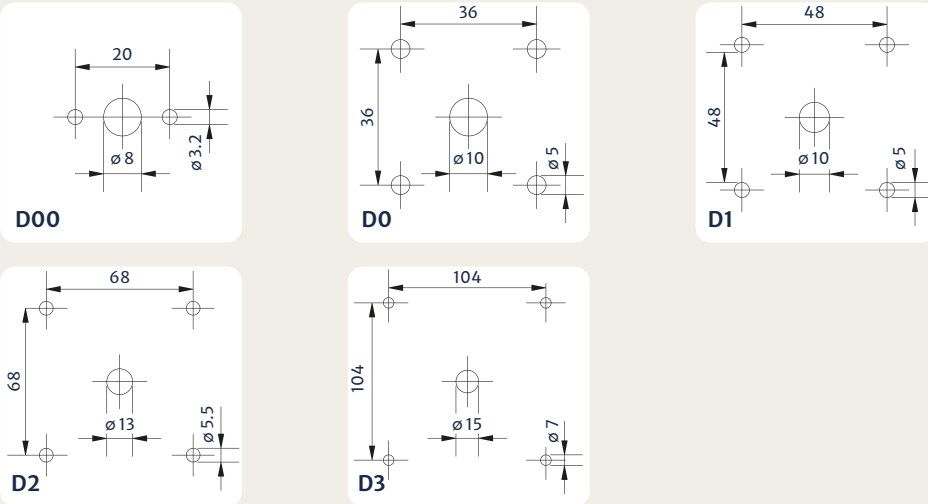
- High switching capacity: 1,500 VDC at 45 A
- Space-saving design
- Self-cleaning, vibration-proof blade contacts
- Available in 2-, 3-, 4-, 6- and 8-pole versions
- Different designs available and also available with a housing
- Worldwide approvals: IEC, CE, UL, cULus, CCC, EAC

We have specially developed our mini DC switches for photovoltaic systems in accordance with IEC 60364-7-712. They provide safe, reliable isolation of photovoltaic modules from the inverter at voltages of up to 1,500 VDC and currents of up to 45 A.

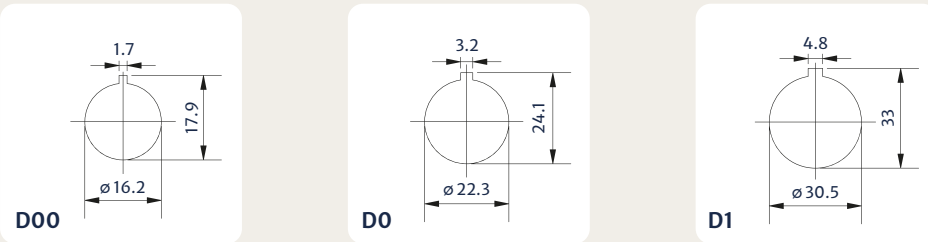
Series	DC-PV1 (= DC21B)									DC-PV2			
	500V	600V	700V	800V	900V	1,000V	1,200V	1,500V	500V	600V	800V	1,000V	
2 poles in series	LDF16	A 16	16	16	16	16	10	7	3	16	14	12	4
	LDF25	A 25	25	25	20	17	11.5	8.5	5	25	21	15	5
	LDF32	A 32	32	32	23	20	13	10	6	32	27	17	6
	LDF38	A 45	45	36	30	25	20	10	6	38	31	19	7
2 poles in series + 2 parallel	LDF16	A 29	29	22	17	16	10	7	3	25	20	12	4
	LDF25	A 45	36	27	20	17	11.5	8.5	5	39	32	15	5
	LDF32	A 50	50	32	23	20	13	10	6	50	35	17	6
	LDF38	A 50	50	36	30	25	20	10	6	50	38	19	7
4 poles in series	LDF16	A 16	16	16	16	16	16	16	16	16	16	16	16
	LDF25	A 25	25	25	25	25	25	25	25	25	25	25	25
	LDF32	A 32	32	32	32	32	32	32	32	32	32	32	32
	LDF38	A 45	45	45	45	45	38	32	32	45	45	38	38
4 poles in series + 2 parallel	LDF016	A 110	29	29	29	29	29	29	20	29	29	21	16
	LDF025	A 75	45	45	45	45	45	33	26	45	45	35	25
	LDF032	A 110	50	50	50	50	50	50	32	50	50	45	32
	LDF038	A 110	50	50	50	50	50	50	32	50	50	50	50

Drill patterns

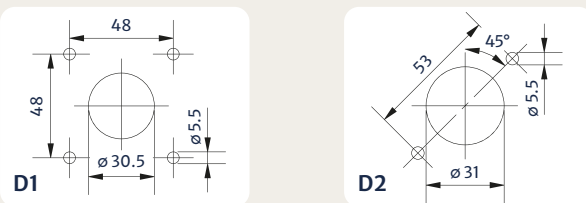
Four-hole mounting



Central hole mounting



Defeatable drive Z39



Socket accessories

With lateral differential compensation

unlocked in ON

Z44



locked in ON

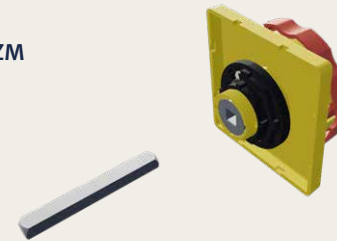
Z45



Without lateral differential compensation

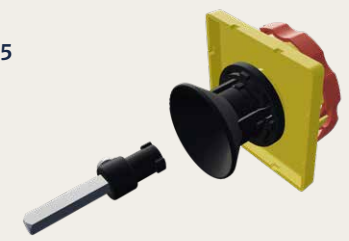
unlocked in ON

VZM

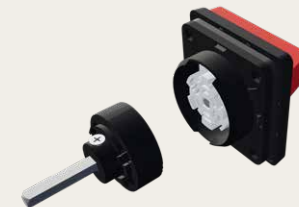


locked in ON

Z75



Z64



Z65



How to get in touch with us

What switching technology challenges do you need our help with? Simply give us a call or write to us. We're here for you from 7.30 a.m. to 5 p.m. every day of the week – and around the clock in case of emergencies. We look forward to receiving your questions and hearing about your projects.

Sontheimer Elektro-Schaltgeräte GmbH

Wendelsteiner Straße 5

91126 Schwabach

Germany

+49 9122 1884 – 0

info@sontheimer.org

sontheimer.org

